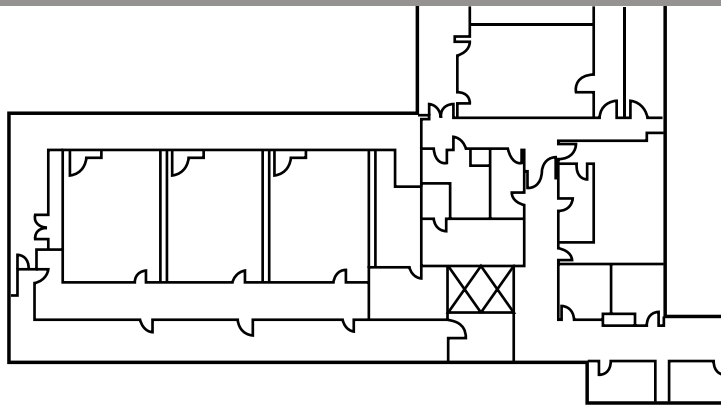




## Comprehensive, Turnkey Drawing and CAD Solutions

CMS Drawing Manager is designed for construction and facility managers to easily administer CAD drawings and archive revisions. This, along with our building documentation services like asset verification and data collection, make FSI the perfect partner for your facility.



## CAD services

**On-Site Building Documentation** – FSI provides on-site visits to physically measure and update your floor plans as built. We can modify existing drawings or create new drawings from scratch.

**Drawing Revisions** – We'll help you get updated, detailed CAD drawings of your as-built floor plans. Standard floor plans include interior and exterior components, and we can expand the scope of your documentation based on your needs.

**Inventory Services** – We offer comprehensive facility walk-throughs to verify and update asset and equipment information.

We can also place barcoded tags on your equipment and load the updated data into your CMMS database.

## Your Single Source of Truth

Space Manager allows you to:

Automatically archive each revised CAD file.

Integrate Space Manager with CMS to Locations and Asset.

Automate communication of all revisions via email to appropriate roles.

Access Drawings anywhere, any time by vendors, contractors, architects and managers.

Assign custom attributes to classify and quickly locate the drawings needed.

Download and upload DWG, PDF, JPG, and other file types.

## A Connected Suite of Operations

Let FSI Verify, Update, Store and Organize your facilities' floor plans data including:

- Life Safety
- Electrical
- Mechanical
- Medical Gas
- Renovations
- As-Built Drawings

Integrate with **CMS View** to place Assets and Work Order locations directly on your floor plans, so users access real-time drawing updates, assets and equipment across your CMMS programs.

Integrate with **CMS Space Manager** to classify and report on locations by:

- Square Footage
- Account/Cost
- Center/Department
- Vacant vs. Occupied
- Custom Attributes
- Utilization Standards (FGI, CSI, etc.)
- Occupancy Type and Occupants

**Maintain 100% Compliance** to your current regulatory and compliance related requirements from Life Safety, The Joint Commission and beyond.

